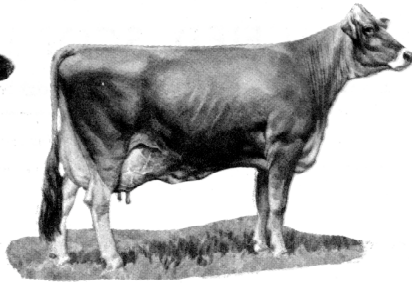


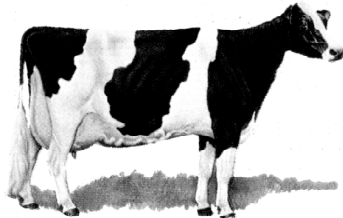
AYRSHIRE



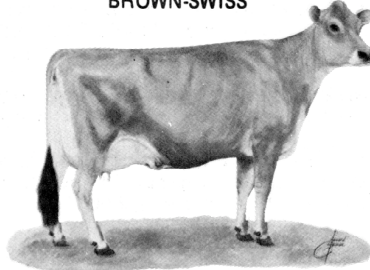
BROWN-SWISS



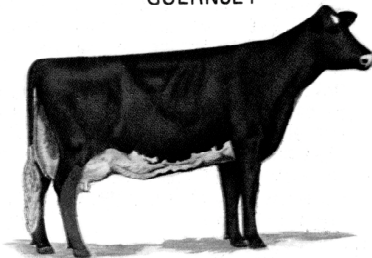
GUERNSEY



HOLSTEIN-FRIESIAN



JERSEY



MILKING SHORTHORN

BREED CHARACTERISTICS

Except for differences in color, size and head character, all breeds are judged on the same standards as outlined in the Unified Score Card. If an animal is registered by one of the dairy breed associations, no discrimination against color or color pattern is to be made.

AYRSHIRE

Strong and robust, showing constitution and vigor, symmetry, style and balance throughout, and characterized by strongly attached, evenly balanced, well-shaped udder.

HEAD—clean cut, proportionate to body; broad muzzle with large, open nostrils; strong jaw; large, bright eyes; forehead, broad and moderately dished; bridge of nose straight; ears medium size and alertly carried.

COLOR—light to deep cherry red, mahogany, brown, or a combination of any of these colors with white, or white alone, distinctive red and white markings preferred.

SIZE—a mature cow in milk should weigh at least 1200 lbs.

HOLSTEIN

Rugged, feminine qualities in an alert cow possessing Holstein size and vigor.

HEAD—clean cut, proportionate to body; broad muzzle with large, open nostrils; strong jaw; large, bright eyes; forehead, broad and moderately dished; bridge of nose straight; ears medium size and alertly carried.

COLOR—black and white or red and white markings clearly defined.

SIZE—a mature cow in milk should weigh a minimum of 1500 lbs.

MILKING SHORTHORN

Strong and vigorous, but not coarse.

HEAD—clean cut, proportionate to body; broad muzzle with large, open nostrils; strong jaw; large, bright eyes; forehead, broad and moderately dished; bridge of nose straight; ears, medium size and alertly carried.

COLOR—red or white or any combination.

SIZE—a mature cow should weigh 1400 lbs.

BROWN SWISS

Strong and vigorous, but not coarse. Size and ruggedness with quality desired. Extreme refinement undesirable.

HEAD—clean cut, proportionate to body; broad muzzle with large, open nostrils; strong jaw; large, bright eyes; forehead, broad and slightly dished; bridge of nose straight; ears medium size and alertly carried.

COLOR—solid brown varying from very light to dark. Muzzle is black encircled by a mealy colored ring, and the tongue, switch and hooves are black.

SIZE—a mature cow in milk should weigh 1500 lbs.

GUERNSEY

Size and strength, with quality and character desired.

HEAD—clean cut, proportionate to body; broad muzzle with large, open nostrils; strong jaw; large, bright eyes; forehead, broad and slightly dished; bridge of nose straight; ears medium size and alertly carried.

COLOR—a shade of fawn with white markings throughout clearly defined. When other points are equal, clear (buff) muzzle will be favored over a smoky or black muzzle.

SIZE—a mature cow in milk should weigh at least 1150 lbs.

JERSEY

Sharpness with strength indicating productive efficiency.

HEAD—proportionate to stature showing refinement and well chiseled bone structure. Face slightly dished with dark eyes that are well set.

COLOR—some shade of fawn with or without white markings. Muzzle is black encircled by a light colored ring, and the tongue and switch may be either white or black.

SIZE—a mature cow in milk should weigh about 1000 lbs.

FACTORS TO BE EVALUATED

The degree of discrimination assigned to each defect is related to its function and heredity. The evaluation of the defect shall be determined by the breeder, the classifier or the judge, based on the guide for discriminations and disqualifications given below.

HORNS

No discrimination for horns.

EYES

1. Blindness in one eye: *Slight discrimination.*
2. Cross or bulging eyes: *Slight discrimination.*
3. Evidence of blindness: *Slight to serious discrimination.*
4. Total blindness: *Disqualification.*

WRY FACE

Slight to serious discrimination.

CROPPED EARS

Slight discrimination.

PARROT JAW

Slight to serious discrimination.

SHOULDERS

Winged: Slight to serious discrimination.

TAIL SETTING

Wry tail or other abnormal tail settings: Slight to serious discrimination.

CAPPED HIP

No discrimination unless affects mobility.

LEGS AND FEET

1. Lameness — apparently permanent and interfering with normal function: *Disqualification.*
Lameness — apparently temporary and not affecting normal function: *Slight discrimination.*
2. Evidence of crampy hind legs: *Serious discrimination.*
3. Evidence of fluid in hocks: *Slight discrimination.*
4. Weak pastern: *Slight to serious discrimination.*
5. Toe out: *Slight discrimination.*

UDDER

1. Lack of defined having: *Slight to serious discrimination.*
2. Udder definitely broken away in attachment: *Serious discrimination.*
3. A weak udder attachment: *Slight to serious discrimination.*
4. Blind quarter: *Disqualification.*
5. One or more light quarters, hard spots in udder, obstruction in teat (spider): *Slight to serious discrimination.*

6. Side leak: *Slight discrimination.*
7. Abnormal milk (bloody, clotted, watery): *Possible discrimination.*

LACK OF SIZE

Slight to serious discrimination.

EVIDENCE OF SHARP PRACTICE (Refer to PDCA Code of Ethics)

1. Animals showing signs of having been tampered with to conceal faults in conformation and to misrepresent the animal's soundness: *Disqualification.*
2. Uncalved heifers showing evidence of having been milked: *Slight to serious discrimination.*

TEMPORARY OR MINOR INJURIES

Blemishes or injuries of a temporary character not affecting animal's usefulness: *Slight discrimination.*

OVERCONDITIONED

Slight to serious discrimination.

FREEMARTIN HEIFERS

Disqualification.